

à MALZEVILLE : *Les Jardins du Square*

Nouvel Habitat
— Promotion et Constructions —

Lot Commercial
n°20

surfaces habitables

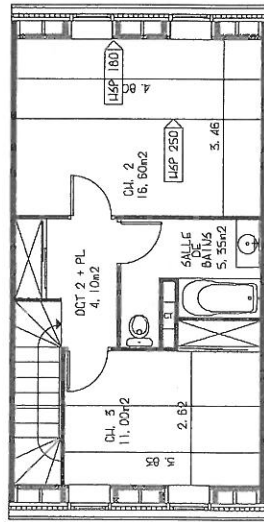
Séjour	23,80
Cuisine	8,10
Ch 1	12,00
Ch 2	16,60
Ch 3	11,00
Bains	5,35
Douche	2,10
WC	1,55
Dgts	11,25
Rangts	0,75
Total	92,50

surfaces annexes

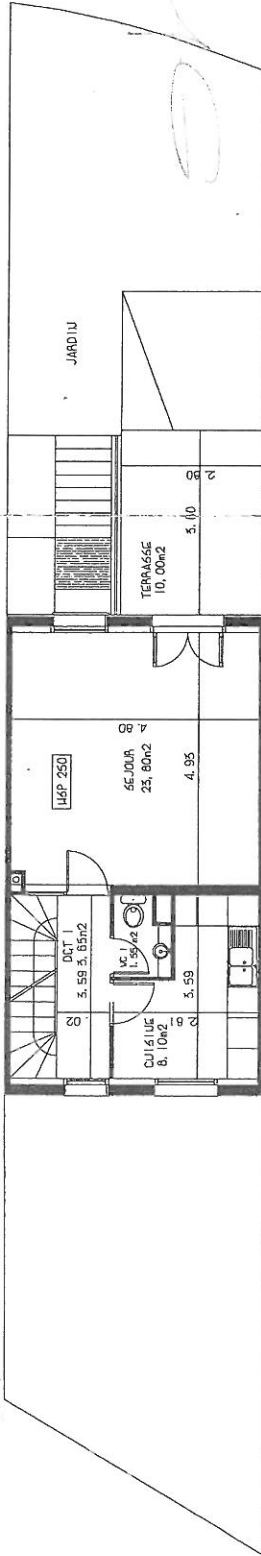
Garage	14,80
Ceiller	4,60
Abri de jardin	8,90
Terrasse	0,00

ECH 1/100

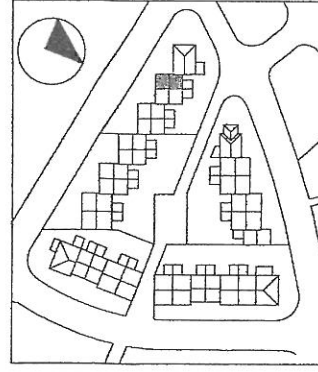
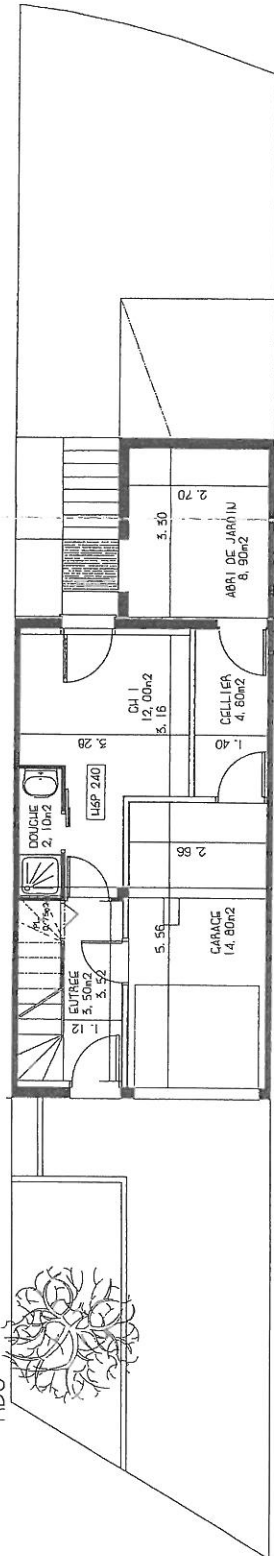
R+2



R+1



RDC

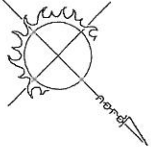
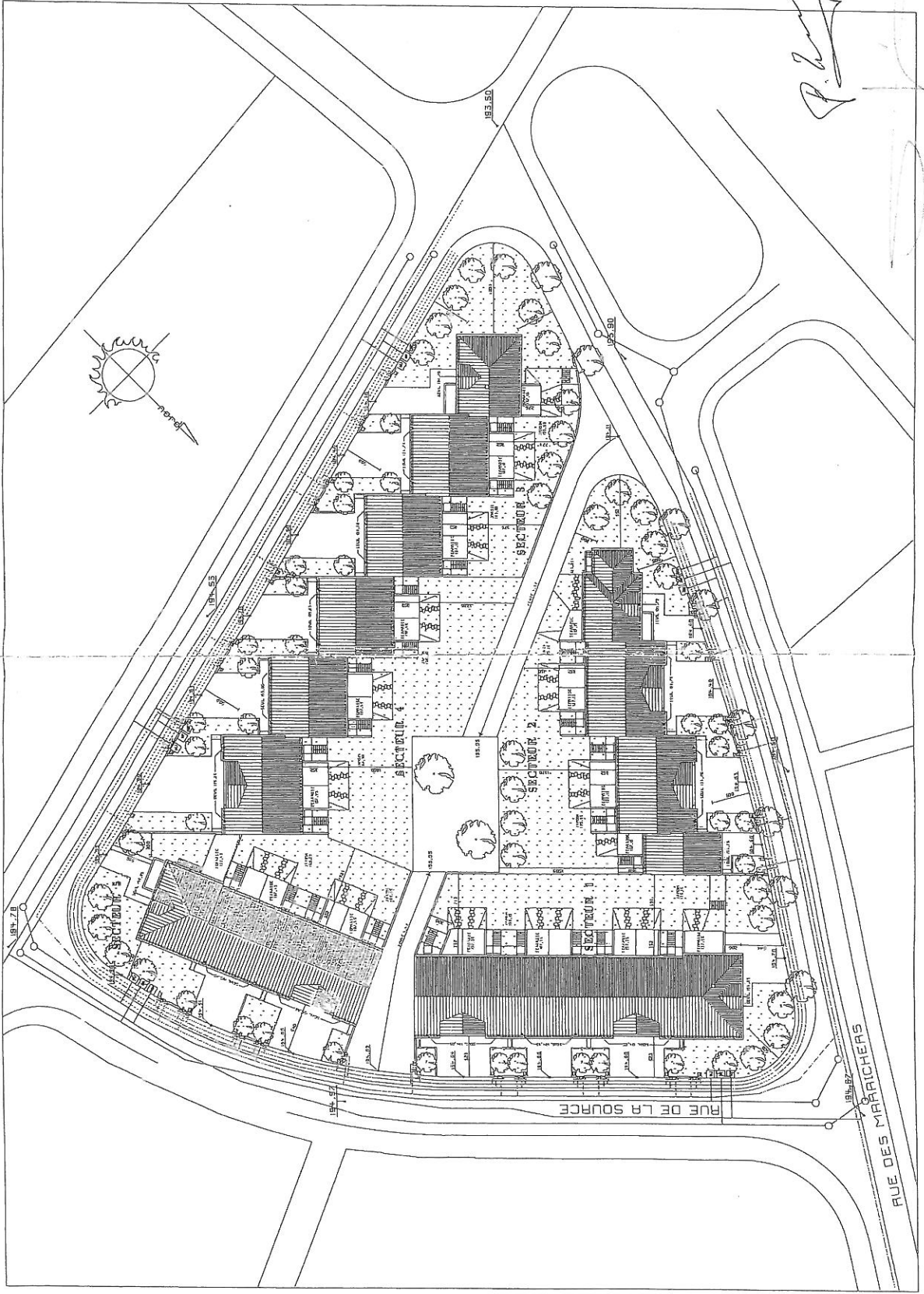


CONSEIL



domus

P. 207



RUE DE LA SOURCE

RUE DES MARCHIERS